

New End News



Newsletter 24
Thursday, 12th March 2020

See the future



...it starts here!

Newsletter Contents

Page	Topic	Summary of Article
2	COVID-19 Update from the DFE	Update from the DFE and Public Health England about COVID-19 (Coronavirus) and includes how the school is reinforcing messages from these departments.
3	Camden Music Festival at The Royal Albert Hall	Information about the school's involvement in the Camden Music Festival.
3	Science Week	Information about activities that the school has been involved in for Science Week this week.
4	NESA News	NESA reminders
5	Thinking Thursday	Information about a new weekly activity we are trialling.
5	The Warm Baby Project	Information about The Warm Baby project we are supporting.
6	Attendance and Punctuality	Weekly and half yearly update on attendance and punctuality across the school.
7	And Finally	Message from the Headteacher
7	2019-2020 Dates for your Diary	Planned events during this calendar year. No new dates have been added this week.

Be on time



at five to nine

Events over the Next Week

Mon, 16th March

4P Class Assembly – 3pm

Fri, 20th March

Friends' Friday

Karyn Ray Headteacher
Alan Girling Deputy Headteacher
Linda Davies Chair of Governors
www.newend.camden.sch.uk

COVID-19 Update from the Department for Education (DFE)

The DFE continues to update schools by daily emails to keep us updated on the government's response to COVID-19 (Coronavirus). As a school we follow all the advice provided by the DfE and Public Health England.

The daily bulletin continues to reinforce schools reiterating good hygiene with particular reference to hand washing and coughing/sneezing.

As a school we continue to do this through age appropriate posters, videos and regular reminders. As noted last week, there are general principles anyone can follow to help prevent the spread of any respiratory viruses. We are reminding children of these regularly in regards to hand washing (washing your hands often - with soap and water, or using alcohol sanitiser if handwashing facilities are not available) and sneezing/coughing (covering your cough or sneeze with a tissue, then throwing the tissue in a bin or sneezing into your elbow if you do not have a tissue).

All classes continue to look at age appropriate videos that have been recommended in relation to this. We have posters up in classrooms and around the school to reiterate these practices. These are on both the website (in the Newsletter section) and the school app so that you can reiterate these practices at home.

As a school we are cleaning and disinfecting touched surfaces every day.

No sanitisers are available at the moment, but if you wish your child to use a hand sanitiser, they are welcome to bring it into school. However, we will be reminding children that these sanitisers are not to be shared and not used in the middle of lessons and would appreciate you reinforcing this message at home so that lessons can continue as normal.

We would also remind parents and carers that:

- People who feel unwell should stay at home and should not attend work or any education or childcare setting.
- If you are worried about your symptoms or those of a child or colleague, please call NHS 111. Do not go directly to your GP or other healthcare environment.
- See further information on the Public Health England Blog and the NHS UK website.
- If you have been advised to self-isolate or have been diagnosed with COVID-19, please inform the school immediately so that we can take advice.

To the best of our knowledge, no New End family has been within identified areas required to self-isolate or have been advised by the NHS to self-isolate. Identified areas are being updated regularly and we will continue to share this information with you by sending the link as noted below.

Earlier this week the Prime Minister confirmed that the government's response to COVID-19 remains in the Contain phase – the first phase in the government's coronavirus action plan. The coronavirus action plan was launched last week. This document sets out what we have done to tackle coronavirus (COVID-19), and what it plans to do next, depending upon the course the current coronavirus outbreak takes. The action plan can be found here:

<https://www.gov.uk/government/publications/coronavirus-action-plan>

Advice from Public Health England continues to be for education and children's social care settings to remain open, unless advised otherwise. They are continually reviewing how best to support all educational settings and the impact of any measures will be considered carefully before being implemented.

Updates on COVID-19 can be found at <https://www.gov.uk/coronavirus>

If any advice changes, we will inform all parents and carers via the school app and email. We will also pass on the information to year group reps to send out to groups.

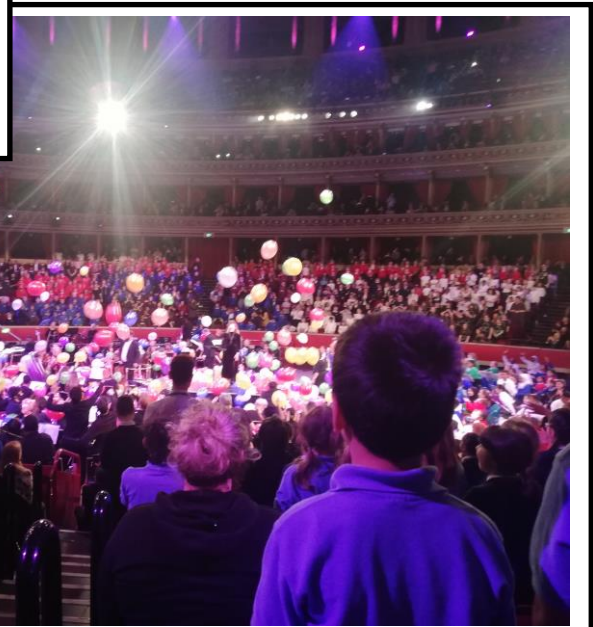
As always, it is vital that parents are at least connected to the school app or email as this is our main platform for sharing information. Details on how to download the app were sent out by letter yesterday.

Camden Music Festival

On Tuesday, 10th March forty five children represented New End at the Camden Music Festival. This event is held every two years and involves both primary and secondary mass choirs and instrumental performances. Five Year 4 children played recorder as part of the mass recorder group and forty children from Year 3 to Year 6 performed as part of the mass choir. All the children did a wonderful job and should rightly be proud of themselves.

My thanks to Maria Walker, Music Leader of Teaching and Learning, and Izzi Allies for all their work in preparing the choir. Thanks to Maria Walker and Rosie Reed for all their work with the recorder players. Thanks also to Maria, Izzi, Steve Buzzard, Ricardo (Lourdes' dad) and Tony (Tobias' dad) for accompanying the children for rehearsals and on the day / evening.

Here's a few photos. More will be uploaded to the school website in the future.



Science Week at New End

Everyone at New End has been enjoying Science Week! My thanks to Leonie Devine, Science Leader, for all her organisation and the class teachers for getting so involved.

All the children have enjoyed an exciting range of activities including:

- Science Workshops – all children had practical demonstrations based around the theme of either states of matter, forces or electricity. The children all had a great time!
- Group Science Investigations. Working across year groups, each class will have the opportunity to engage in a number of investigations.
- Poster Competition. Based around the Science week theme of “Our Diverse Planet”, children are encouraged to create a poster for our in-school competition. These are due back Monday morning. Look out for the winners in an upcoming newsletter.

Thanks to a generous donation by a New End family, these workshops were fully funded. We are very grateful and thankful to the family for making this donation which will enable children at New End to access workshops in science week for 2020 and 2021!

PS If you would like to make a contribution in lieu of not having to pay for the workshops, all donations will be spent on additional science equipment.

NESA News

Quiz Night!

Saturday 28th March 2020, 6.30 pm (doors open at 6pm)

Join us for a fun evening with other parents and staff and our very own Quiz Master Mr Alan Girling!

Tickets £10 - buy at drop off and pick up, or through Paypal here:

[Buy Quiz Night Tickets on-line here](#)

We also have childcare available at New End Nursery: £10 for the first child and £5 thereafter. Food and film included.

Booking is essential - write to nesachair@gmail.com

Remember that this event is a fundraiser to support all our children at New End. Thank you!

Volunteers

A huge thanks to all volunteers that helped out on Saturday! Your help was very much needed and appreciated. Stay tuned for more on the Book Hut on the roof soon! **(A HUGE thanks to the mums and dads who gave up their Saturday afternoon to complete this task – so much appreciated! Karyn)**

Year 6 Spring Masquerade - CANCELLED

Thanks to everyone who has signed up and paid for the Year 6 disco today. Unfortunately, we do not have enough children to go ahead with it and must therefore CANCEL.

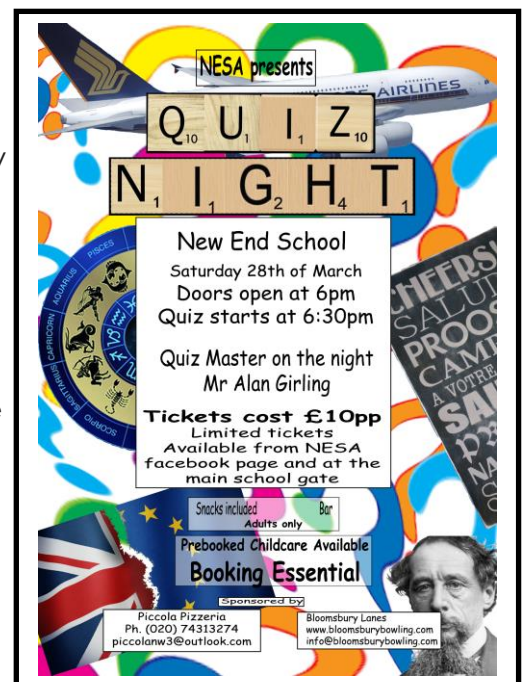
You can exchange your disco tickets for games tokens, useable at the Y6 games on Friday 20th and 27th March (during school time) or we are happy to refund them. Please get in touch with the Y6 reps. More information on games soon.

Keep in touch

nesachair@gmail.com

[@nesa1906](#)

[Facebook](#)



'Thinking Thursday'

As part of our philosophical enquiry approach in school, each week we will be sending out a question for the children to discuss at home. To start us off, this week's question is:

If you could make one rule that everyone in the world had to follow, what would it be and why?

If you would like to share what you have been talking about, you can send your response into school on the sheet that will go home with the children.

The Warm Baby Project

As a school we are trying to donate to a community project that supports premature babies in Cambridge.

The Warm Baby Project Just Giving Page was set up in April 2018 with the purpose of raising money to be able to supply wool to knitters to make items for premature babies. If you would like to make a cash donation you can go to <https://www.justgiving.com/crowdfunding/warmbabyproject2018>

However we would like to help one of the paediatric nurses make knitted squares which can be used to cover cannulas on premature babies and children under one. These are single usage so they need many.

If you are a knitter (and perhaps thinking of teaching your child to knit!) we are asking that you create the small tubes. Each one needs to be approximately 10 X 14cm and then joined up.

The suggested instructions are:

4mm needles

DK Yarn

26 stitches, 36 rows of garter stitch and then sewn up on the longer sides.

Please bring any knitted tubes to the school office. Some of the classes are planning to have a go at making them too. All donations will be sent after the Easter break.



Attendance and Punctuality

Here is last week's attendance and punctuality.

	Attendance	Unauthorised Absence	No of Lates (no of chn)
RH	96.96%	0 ☺	2 (2)
RL	88.40%	0 ☺	2 (2)
1D	98.40%	0 ☺	3 (2)
1K	97.20%	0.40%	6 (4)
2D	96.36%	0 ☺	4 (2)
2J	88.00%	5.00%	1 (1)
3G	93.04%	0 ☺	7 (4)
3M	94.80%	0.80%	4 (3)
4P	98.26%	0 ☺	2 (2)
4W	92.50%	0.83%	4 (3)
5M	93.60%	0 ☺	7 (3)
5N	96.80%	0 ☺	5 (4)
6R	93.85%	0 ☺	2 (2)
6SG	93.33%	0.83%	5 (4)

Well done RH, RL, 1D, 2D, 3G, 4P, 5M, 5N and 6R – all classes with 0% unauthorised absence last week!

No class had 100% attendance last week!

No class had everyone in school on time every day last week!

Attendance across the school last week was 94.27%, with an unauthorised absence level of 0.52%. Parents and carers are reminded that if you do not contact the office to give a reason for your child's absence, it is recorded as unauthorised.

Remember that good attendance is seen as 96% or better. Attendance to date this academic year is 94.40% with an unauthorised absence level of 0.85%. It is good to see this improving but we all need to continue to work together to improve these figures! Parents and carers are reminded that any absence from school is considered an absence on your child's record.

There were 54 lates last week (14 more than the week before) involving 38 children (3 more than the week before) throughout the school. Improvement definitely still needed! It is very important for all children to attend school every day and to arrive on time.

Not only does lateness make a bad start to the day, **arrival after 9.30am is considered half a day's unauthorised absence.** All lateness/attendance is recorded and monitored by the school and the Education Welfare Officer.

Be on time



at five to nine

And Finally

Thank you to everyone who collected their bits and pieces from lost property at the start of the week. Uncollected items with no names have now been taken to a local charity shop.

Continue to take care of yourselves and look out for each other.

Karyn Ray Headteacher

2019-2020 Dates for your Diary

Mon, 16 th March	4P Class Assembly
Fri, 20 th March	Friends' Friday
Mon, 23 rd March	3G Class Assembly
Fri, 27 th March	Friends' Friday
Mon, 30 th March	3M Class Assembly
Tues, 31st March	Year 6 School Journey Meeting – 6.30pm – Please note the change of date
Fri, 3 rd April	Last Day of Spring Term
Mon, 20 th April	INSET Day
Tues, 21 st April	Chn return for the start of the Summer Term
Fri, 24 th April	Star Assemblies
Mon, 27 th April	1K Class Assembly
May	Key Stage 1 SATs Assessment Period
Fri, 8 th May	May Day Holiday
	Please note the change of day in 2020 from a MONDAY to a FRIDAY to coincide with the 75 th anniversary of the end of WWII
W/B Mon, 11 th May	Year Six Key Stage Two SATs
Mon, 18 th May	RL Class Assembly
Mon, 25 th – Fri 29 th May	Half Term
Fri, 5 th June	Star Assemblies
W/B Mon, 8 th June	Year One Phonics Screening
W/B 8 th Mon, June – Fri, 26 th June	Year Four Multiplication Tables Check
Mon, 8 th June	RH Class Assembly
Mon, 15 th June	Nursery Class Assembly
Fri, 17 th July	Last Day of Summer Term - School closes at 1.30pm
Mon, 20 th July	INSET Day
Tues, 21 st July	INSET Day

2020-2021 Dates for your Diary

Wed, 2 nd September	INSET Day
Thurs, 3 rd September	INSET Day
Fri, 4 th September	INSET Day
Mon, 7 th September	Children return for the start of the Autumn Term
Mon 26 th – Fri 30 th October	Half Term
Friday 18 th December	Last Day of Autumn Term
Mon, 4 th January	INSET Day
Tues, 5 th January	Children return for the start of the Spring Term
Mon 15 th – Fri 19 th February	Half Term
Wed, 31 st March	Last Day of Spring Term
Mon, 19 th April	INSET Day
Tues, 20 th April	Children return for the start of the Spring Term
Mon, 31 st May – Fri, 4 th June	Half Term
Fri, 23 rd July	Last Day of Summer Term

IF A DATE CHANGES OR IS ADDED, IT WILL BE HIGHLIGHTED IN THIS SECTION.

DATES ARE SUBJECT TO CHANGE – OFTEN BY OUTSIDE FORCES!