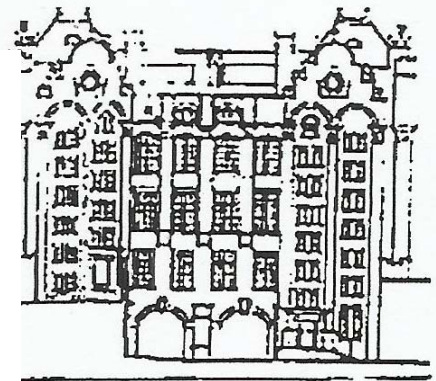


New End Primary School
Streatley Place, London NW3 1HU

020 7431 0961

Newsletter No 18

Thursday 31st January



Holidays During Term Time

Please remember that anyone requesting leave must complete an official 'Request for exceptional leave' form. These forms are available from the school office. Letters can be attached to this form, if parents wish, but the official form must be completed before any leave is considered. Please ensure you follow the correct school procedures.

Three penalty notices were issued last year by Camden – fines of £100 to £200 were made to families taking unauthorised leave during term time.

N.B. The Head does not authorise absence it can be recommended but the decision to grant leave lies with the education welfare department in Camden.

Find below the dates agreed by the school governors for the school year 2013/14. Please use them to book absences/holidays outside of term times. Thank you.

2013/14

Autumn term

Tuesday 3rd September* - Friday 20 December 2013

INSET Day Monday, 2nd September

Half term

Monday 28 October 2013 - Friday 1 November 2013

Spring term

Tuesday 7th January - Friday 4 April 2014

INSET Day Monday, 6th January

Half term

Monday 17 - Friday 21 February 2014

Summer term

Wednesday 23 April – Friday 18th July 2014

INSET Day Tuesday 22nd April

Monday 21st July

Tuesday 22nd July

Half term

Monday 26 - Friday 30 May 2014

Congratulations

Lucy Kindall was finally safely delivered of her baby girl (8lb 2oz). So many people followed this pregnancy as Lucy was busy in the school and on the office desk after 3.30pm. The whole New End community extend a warm welcome to Katalaya and her proud mum.

School Consultations

Open classrooms provide an opportunity for parents to visit their child's classroom while the school is in session. It is difficult to open the school to a huge amount of visitors so we spread the different year groups across different days of the week.

To avoid congestion we try not to have year groups on the same floor having an open class event at the same time.

Even with this level of prior planning there could be clashes with siblings being in different year groups but on the same day.

Do try to come along - the open mornings are listed below:

Tues 5 th February	Year 1 and Year 4
Wed 6 th February	Year 2 and Year 5
Thurs 7 th February	Year 3
Friday 8 th February	Year 6 and Reception

Open classes take place from 9-9.30am. Please note that visits finish at 9.30am and we would ask parents/carers to leave the school promptly to enable the staff to return to their teaching with their classes.

Parent teacher consultations take place in the following week: Mon 11th February – Fri 15th February. Sign up sheets will be available in the lower hall from MONDAY 4th FEBRUARY.

NESA Film Matinee

Sunday February 3rd

Doors open 3pm for 3.30pm start

2 age groups/2 matinees

Screen 1 Nursery – Year 3

Screen 2 Year 4 – Year 6

Kids £3 (includes drink, popcorn + film)

Adults free.

Taster Menus

Following a meeting with parents it was suggested that an opportunity be created to see what school dinners are really like. Joe, the New End chef, rose to the challenge and has arranged a taster session on Thursday 28th February in the dining room from 3pm.

Do come along and sample some of the dishes served here each week. The opportunity to try barbecue chicken, beef lasagne, pizza and puddings might be too tempting!

Please put this date in your diary.

Attendance and Punctuality

Congratulations to classes RM (93.3%) and 5H (98.6%) for the best attendances in the week of January 21st. These classes hosted the teddies for the week. Attendance across the school was a low 91.8%, no doubt affected by the adverse weather conditions last week, with an unauthorised absence level of 2.5%. There were 82 lates in the week (23 more than the previous week), involving 56 children throughout the school (11 more than the previous week). The most punctual classes were RS and 5H (both 1 late). Well done to the children in these classes. Class RS has the Early Bird for the week and children in class 5H have been entertained by The Wizard!