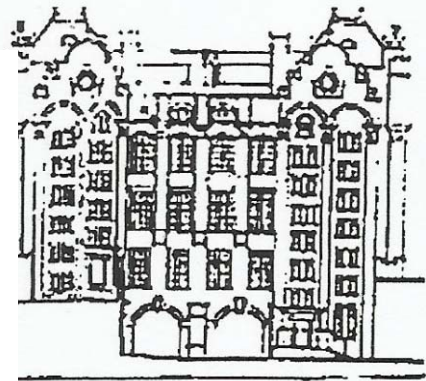


New End Primary School
Streatley Place, London NW3 1HU

020 7431 0961

Newsletter No 16

Friday 18th January



Open Classrooms

Open classrooms provide an opportunity for parents to visit their child's classroom while the school is in session. It is difficult to open the school to a huge amount of visitors so we spread the different year groups across different days of the week.

To avoid congestion we try not to have year groups on the same floor having an open class event at the same time.

Even with this level of prior planning there could be clashes with siblings being in different year groups but on the same day.

Do try to come along - the open mornings are listed below:

Tues 5 th February	Year 1 and Year 4
Wed 6 th February	Year 2 and Year 5
Thurs 7 th February	Year 3
Friday 8 th February	Year 6 and Reception

Open classes take place from 9-9.30am. Please note that visits finish at 9.30am and we would ask parents/carers to leave the school promptly to enable the staff to return to their teaching with their classes.

Parent teacher consultations take place in the following week: Mon 11th February – Fri 15th February. The appointment schedule will be opened nearer the time. Please make a note of these important dates in your diary.

Correction

In the last newsletter it was listed that the donation went to Macmillan cancer when it should have read Marie Curie Cancer Research.

Apologies for the mix up – the sum was dispatched to Marie Curie.

Year 6 Toy Sale

As you're cleaning out the old to make way for all the new Christmas toys and holiday gifts – don't throw those things away! Year 6 will be sponsoring a "Nearly New" sale next month and we'd love your donations! More information to follow. Thanks!

Attendance and Punctuality

Congratulations to classes 1D (99.1%) and 5H (97.8%) for the best attendances in the week of January 7th. These classes hosted the teddies for the week. Attendance across the school was 93.6%, with an unauthorised absence level of 2.09%. There were 42 lates in the week (21 less than the previous school week), involving 36 children throughout the school (14 less than the previous week). The most punctual classes were RM, 2S and 4P (all 1 late). Well done to the children in these classes. Class 2S has the Early Bird for the week and children in class 4P have been entertained by The Wizard!

A Message From Linda Davies, Chair of Governors

I am delighted to tell you that Karyn Ray will be returning to her post as headteacher as planned on Monday 25th February.

Kevin Gallagher, who has been working as interim headteacher during Karyn's absence on maternity leave, will be leaving us on 28th February allowing three days handover. I'd like to record my thanks to Kevin, not just for the support he has given to me as chair but for the calm professionalism with which he has handled every challenge New End has thrown at him.

Kevin Gallagher

As you can see from the note above the planned handover to Karyn Ray is in hand and will take place in the week after half term.

Until then it is business as usual as we move towards the middle of the school year with its important meetings and events.

I look forward to continuing working with the staff, pupils and families of New End until the end of February.

Kevin Gallagher

Valentine Day Disco

Debbie Walberg is organising the annual Valentine's day disco on **Thursday 14th February**. There is one early bird disco for years 1, 2 and 3 and a later start for years 4, 5 and 6.

Nursery and Reception have their disco on Wednesday 13th February.

All details will be sent to you in a letter at the end of January and all proceeds go to charity.

Tickets are limited so do apply on the relevant days to avoid disappointment.

Clubs Signup

The huge club signup morning went off without too much disappointment. Thanks go to Debbie Walberg for organising this important morning and Polly for helping.

The vast majority of families did get what they wanted and those that were unsuccessful have been placed on waiting lists.

The fairness of this process is essential and that is why only parents of individual children can sign them up in person otherwise you get one adult taking spaces in several clubs for several friends/relations etc...

Thank you to the parents that waited patiently, were understanding when disappointed and helped to make the signup efficient and fair. Thank you.

Newsletter

Apologies that this newsletter went out late it is the result of a computer glitch.

Some parents approached the school observing that they had not received a newsletter. New End, like the vast majority of schools, uses pupil post. Letters are handed to pupils or put into the book bags of younger pupils and parents are expected to check bags for these important communications.

Do help us for asking for or looking for these important communications – they are our principal way of keeping you informed about school and all that goes on here.