



New End News



Newsletter 7
Thursday, 13th October 2022

See the future



...it starts here!

Newsletter Contents

Page	Topic	<u>Summary of Article</u>
2	Parent-Teacher Meetings	Information about parent teacher meetings this half term
2	Harvest Festival	Information about our Harvest Festival collection
2	KS2 Author Visit	Information about the visit of Philip Hartley on Wednesday, 19 th October
2	Nasal Flu Vaccination	Reminder about how to give consent to the nasal flu vaccination on Tuesday, 18 th October
3	Attendance and Punctuality	Information about weekly attendance and punctuality
4	Coffee with Karyn - Unlocking Potential	Reminder about the coffee morning about UP at New End
4	Celebrating Sporting Behaviour	Information about sporting awards at New End
4	CSSA Cross Country	Information about CSSA Cross Country competition
4	Friends' Friday	Information about the return of Friends' Friday
5	NESA News	Information about NESA – New End's Parent-Teacher Association
6	And Finally	Message from the Headteacher Including news on the nasal flu vaccinations
6	2022-2023 Dates for your Diary	Planned events during this calendar year.

Events over the Next Week

Friday, 14 th October	Friends' Friday
Tues, 18 th October	Nasal Flu Vaccinations
Wed, 19 th October	KS2 Author Visit – Philip Hartley
Thurs, 20 th October	Coffee with Karyn – Unlocking Potential at New End
Friday, 21 st October	Friends' Friday
Friday, 21 st October	School Finishes at NORMAL TIME
Mon 24 th – Fri, 28 th	Half Term

Karyn Ray Headteacher
Alan Girling Deputy Headteacher
Linda Davies Chair of Governors
www.newend.camden.sch.uk

Parent-Teacher Meetings – A Reminder

This term's opportunity to meet the teacher and discuss how well your child has settled into their new class will be similar to last year. In order to reduce risk we will operate a controlled-entry system whereby Year Group teachers will be available from 3.50pm - 7.30pm for 10 minute slots on the following evenings:

Tuesday 18th October Year 3, Year 4, Year 5, 6SG

Wednesday 19th October Nursery, Reception, Year 1, Year 2, 6R

Only a few appointments for some classes are left but ensure you book **by 6pm on Friday, 14th October**. If you do not have a Scopay account, please contact the school office for an online code.

If there are no appointments left, please contact your child's class teacher directly by email.

On the evening of your allocated slot, all access to the building will be via the Main Gate in Streatley Place. We ask that you arrive **5 minutes** before your time in order to be admitted. The meetings will be held in your child's classroom. Adhering strictly to timings is important so that we can regulate the flow of parents in and out of the building.

Harvest Festival at New End

Thank you to everyone who donated to our Harvest collection yesterday. If you happen to forget yesterday, donations are being accepted until the end of the day tomorrow, Friday 14th October.



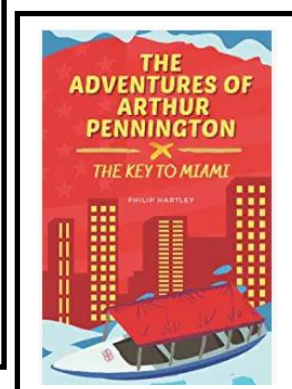
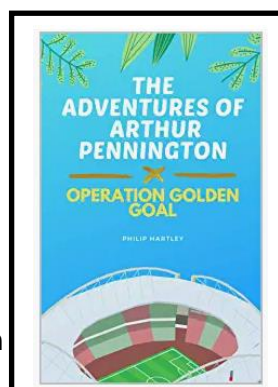
KS2 Author Visit

On Wednesday, 19th October children in Years 3 to 6 will be enjoying a visit by Philip Hartley.

Philip Hartley is a local author and creator of the series The Adventures of Arthur Pennington.

Philip will be talking to the children about the series. He will also be sharing with them his tips as a writer and offering a question and answer session.

Children will be able to purchase one of his books on the day at the discounted price of £5. Money should be sent in on the day.



Nasal Flu Vaccinations

Information about how parents and carers can give consent for the nasal flu vaccinations was sent out via our school app and by email earlier in the week. The consent will be given on line this year instead of returning a paper copy.

The nurses will be in school on the afternoon of Tuesday, 18th October. Only those children whose parents have completed the online consent form will receive the vaccination.

Attendance and Punctuality

Here is last week's attendance and punctuality for individual classes.

	Attendance	Unauthorised Absence	No of Lates (no of chn)
RR	95.89%	0.68%	4 (4)
1D	96.25%	0 😊	3 (1)
1K	95.00%	0 😊	1 (1)
2Q	97.50%	0 😊	4 (2)
2S	97.27%	0 😊	3 (2)
3J	92.59%	0 😊	1 (1)
3P	99.09%	0 😊	1 (1)
4M	97.73%	0 😊	2 (2)
4W	99.09%	0 😊	1 (1)
5M	96.80%	0 😊	1 (1)
5P	89.57%	0.87%	0 😊
6R	96.40%	0 😊	0 😊
6SG	77.73%	0 😊	0 😊

Well done 1D, 1K, 2Q, 2S, 3J, 3P, 4M, 4W, 5M, 6R and 6SG – all classes with no unauthorised absence last week!

Well done 5P, 6R and 6SG - everyone in school on time last week!

Attendance across the school last week is 94.77%, with an unauthorised absence level of 0.20%. Remember that good attendance is seen as 96% or better. Attendance to date this academic year is 94.78% with an unauthorised absence level of 0.26%.

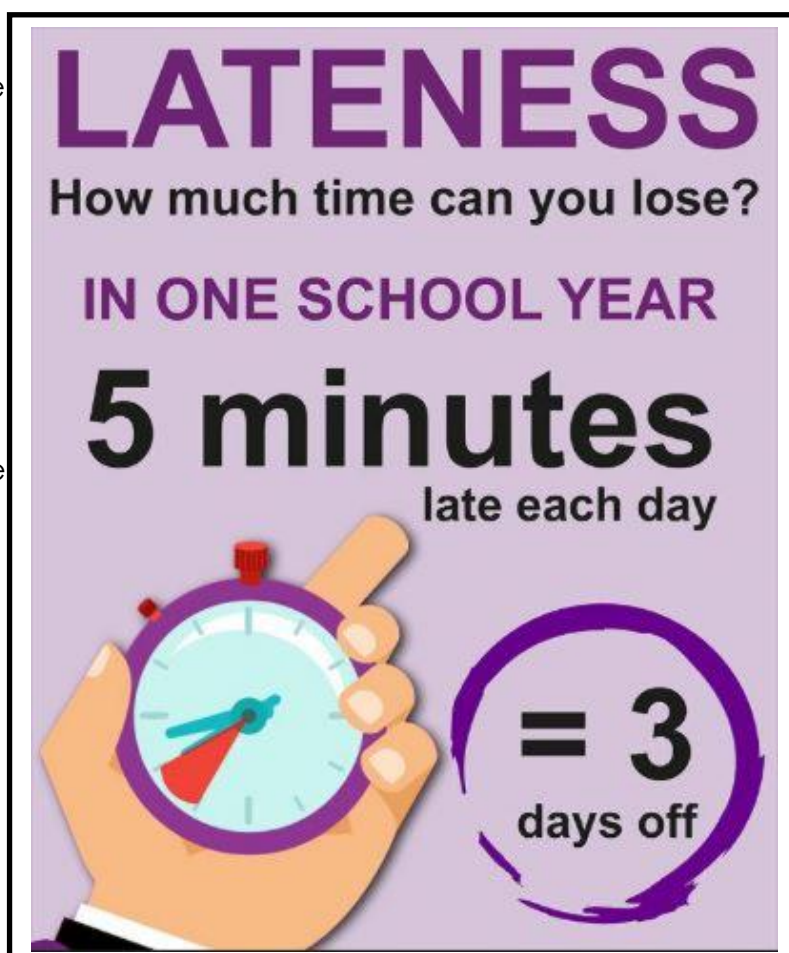
If children are ill, they must remain at home. Please ensure that you contact the school office to explain any absence to ensure that it is authorised.

There have been **21 lates** last week (11 more than last week!) involving **16 children** (8 more than last week) throughout the school.

Children who are late will miss important learning time.

Children who are late disrupt teachers teaching and other children's learning!

Please respect others and be in school on time.



Coffee with Karyn - Unlocking Potential

Don't forget that we will hold a Coffee with Karyn next **Thursday, 20th October** at 9am so that any interested parents can hear about how Unlocking Potential works at New End.

Lucy Brown will be there to talk about the role she plays at New End in supporting the children through various activities.



We hope to see you there!

Celebrating Sporting Behaviour at New End

To emphasise what being a good sport looks like, PE coaches are giving out raffle tickets for children who are exhibiting our sport values:

Teamwork
Cooperate
Supportive attitude
Good communication
Include everyone

Discipline
Play fair
Participate
Improve your skills
Stay focused

Resilience
Learn to win and lose
Problem solve
Adapt to changes
Know you could fail but still be willing to try

Respect
Teammates
Opposition
Officials
Equipment

Selected children can put their ticket/s into their sporting house box. These children go in the draw for a chance to win a prize at the end of a term.

Children also have the opportunity to receive a sports certificate each week. These certificates contribute towards New End Stars.

**Friends' Friday**

For those families who have joined New End this year, Friends' Fridays are sessions that take place on a Friday from 9am to 10.30am.

At these sessions there will be a variety of jobs for volunteers to complete which will be of invaluable support to class teachers. Activities could include making and mending (eg making games, restoring damaged books, etc) laminating, sticking and cutting, tidying up the planting around the school, etc.

We recognise that there might be some members of the school community who would want to volunteer with pre-school aged children. We will ensure that there are some activities and toys to keep your pre-school aged children happy too!

It was also a great opportunity for New End parents to get together for a coffee and a chat!

We look forward to seeing you. Please sign in at the office as you arrive for a visitor pass.

NESA News**A Changing of the Guard**

At our AGM last Friday we said farewell to Eva Nieto McAvoy as Chair of NESA. Eva has been a dedicated and hardworking Chair for the last three years. She has worked tirelessly to help raise money for New End during especially challenging times. Eva's swan song was our summer fair last term - an enormous success due to her passion and enthusiasm. Fortunately for us Eva will still be involved as a trustee.

We are also very happy to welcome Max Christodoulou as our new Chair. Says Max, whose son has just joined New End in Reception, "my only aim for NESA is to create an inclusive, long-standing community of parents, carers, teachers and students, and to raise lots of money so that we can best provide an incredible school experience for all. If you see me knocking around, please do come and say hello!"

Important dates for your diary

KEY DATES CONFIRMED:

Monday 31st October
 Sunday 27th November 12pm-3pm
 Sunday 11th December 2pm-4pm
 Saturday 4th February 4pm-6pm
 Thursday 2nd March
 (coinciding with World Book Day)
 Saturday 18th March
 Monday 15th May
 Friday 19th May
 Sunday 2nd July 12pm-3pm

Non-uniform day
Winter Fair
Festive film day
International Day
Readathon kicks off

Quiz Night
Plant Sale
Teacher Appreciation Day
Summer Fair

Donations Welcome

Don't forget to set up your standing order or make a one-off donation to NEST (guide amount £12.50 per child per month – but anything helps New End enormously!).

**Amazon Smile****HELP NEW END WHEN YOU SHOP WITH AMAZON**

New End School is a listed charity with Amazon. This means that every time you buy something, Amazon will donate 0.5% of your purchase to New End. Just remember **AmazonSMILE** instead of Amazon for all the same purchases.

Setting this up is easy:

1. For your first AmazonSmile purchase copy this link to connect your usual Amazon account to New End: <https://smile.amazon.co.uk/ch/1111524-0>

You'll only need to do this once. After that AmazonSmile will recognise your account as a friend of New End.

Continued next page

Max Christodoulou

NESA News Continued

2. The next time you shop with Amazon, enter through smile.amazon.co.uk instead of amazon.co.uk

3. Encourage your extended family and friends to do the same!

Are you an Amazon App user? You can turn on AmazonSmile through your Amazon app:

- Open your Amazon app
- Drop down the main menu (≡) and select "Settings"
- Tap on 'AmazonSmile'
- Follow the on-screen instructions to ensure all future Amazon purchases donate 0.5% to New End

Happy shopping!

Max Christodoulou

NESA Chair

@nesa1906

Facebook

And Finally

Looking forward to welcoming you into school for Parent-Teacher Meetings next week. These meetings are crucial as it is really important that school and home work together

Continue to take care of yourselves and look out for each other.

Karyn Ray Headteacher

2022-2023 Dates for your Diary

Tues, 18 th Oct	Nasal Flu Vaccinations – more information to follow
Wed, 19 th Oct	KS2 Author Visit – Philip Hartley – more info to follow
Thurs, 20 th Oct	Coffee with Karyn – Unlocking Potential at New End
Mon, 24 th Oct – Fri, 28 th Oct	Half Term
Mon, 31st October	Non-Uniform Day
Fri, 4 th Nov	Star Assemblies
Fri, 11 th Nov	Individual photos
Wed, 30 th Nov	3P Class Assembly – 3pm
Fri, 16 th Dec	Last Day of Autumn Term
Tues, 3 rd Jan	INSET Day – school closed to children
Wed, 4 th Jan	Children return to school
Mon, 13 th Feb – Fri, 17 th Feb	Half Term
Wed, 1 st Feb	4M Class Assembly – 3pm
Wed, 8 th Feb	4W Class Assembly – 3pm
Wed, 1 st March	2S Class Assembly – 3pm
Wed, 8 th March	1D Class Assembly – 3pm
Wed, 15 th March	1K Class Assembly – 3pm
Fri, 31 st March	Last Day of Spring Term
Mon, 17 th April	INSET Day – school closed to children
Tues, 18 th April	Children return to school
Wed, 26 th April	2Q Class Assembly – 3pm
Fri, 28 th April	Sports Day
Wed, 3 rd May	3J Class Assembly – 3pm
W/B 8 th May	Year 6 SATs
Wed, 10 th May	Reception Class Assembly – 3pm
Wed, 17 th May	Nursery Class Assembly – 3pm
22 nd – 26 th May	Year 6 School Journey
Mon, 29 th May – Fri, 2 nd June	Half Term
Mon, 5 th June	INSET Day
W / B 12 th June	Year One Phonic Screening
Fri, 21 st July	Last Day of the 2022-2023 Academic Year

IF A DATE CHANGES OR IS ADDED, IT WILL BE HIGHLIGHTED IN THIS SECTION.