



# New End News



**Newsletter 19**  
**Thursday, 24<sup>th</sup> January 2025**

See the future



...it starts here!

## Newsletter Contents

Page	Topic	<u>Summary of Article</u>
2	Promoting British Values	Information about the British Value – The Rule of Law
2	Children's Mental Health Week 2025	Information about Mental Health Week at new End
2	Healthy Snacks	Reminders about appropriate snacks in school
3	Year 5 and 6 Career Talks	Requests for volunteers for this year's career talks
3	Safeguarding Reminders	Reminders for parents
4	Attendance and Punctuality	Weekly updates and reminders
5	Change of details	Reminders for parents and carers about keeping the office up-to-date with your contact details
5	Instagram this Week	Some of the images from this week
6	And Finally	Message from the Headteacher
6	2024-2025 and 2025-2026 Dates for your Diary	Planned events during this calendar year. Dates for next academic year.

## Events over the Next Week

Wednesday, 29<sup>th</sup> January

4M Class Assembly

**Karyn Ray Headteacher**  
**Alan Girling Deputy Headteacher**  
**Helen Andrews Chair of Governors**  
[www.newend.camden.sch.uk](http://www.newend.camden.sch.uk)

### Promoting British Values

In 2011, the government defined British Values as:

- **democracy**
- **the rule of law**
- **individual liberty**
- **mutual respect**
- **tolerance of different faiths and beliefs.**

We promote these values through our own school values, curriculum and enrichment activities. Over the next five weeks we will be sharing how we promote each of these areas.

The second is **the rule of law**.

We promote the rule of law at New End by:

- having high expectations about pupil conduct and this is reflected in our Behaviour Policy. There are rewards for exhibiting good and caring behaviour and consistent demonstration of our values is recognised through certificates and New End Stars.
- ensuring that in our school assemblies, circle time and PSHE children are taught how to earn trust and respect and are supported to develop a strong sense of morality; knowing right from wrong and doing the right thing even when it's difficult.
- teaching children about the United Nations Convention on the Rights of the Child and learn to respect their rights and the rights of others.
- having agreed school rules
- classes have either rules or class charters.

Next week...**individual liberty!**

### Children's Mental Health Week 2025

Children's Mental Health Week is taking place between **3<sup>rd</sup> and 9<sup>th</sup> February 2025**. This year's theme at New End is **Reconnect to disconnect: The power of going offline!**

We will be encouraging children (and adults) to think about the importance of tech breaks and provide activities to support this. We will offer resources for parents to support their understanding of the impact of screen time and facilitate meaningful conversations with their children.

The school will be working with Lucy, Isobel and Unlocking Potential (UP) to share information with the children to support their mental health and well-being. A variety of daily activities are being developed by staff and Unlocking Potential. **Why not start thinking as a family of activities you could do during the week that don't involve being online?**

As part of the week we are planning a **non-uniform day** on **Wednesday, 5<sup>th</sup> February**, which is also Lucy's last day at New End. Children can wear their favourite clothes that express who they are! A gold coin donation is requested with all money collected being donated a charity to be agreed upon.

### Healthy Snacks

Parents and carers are reminded that children from Reception to Year 2 have access to fresh fruit and vegetable snacks each day. Children in all years can bring in their own snacks but these must be healthy snacks and preferably fruit or vegetables. Ideas for snacks can be found on the school website.

**Please remember that these are snacks that can be eaten in 5 minutes and not a full meal!** Some of the children are currently struggling to eat lunch as they are still full from their snack! Thank you for your ongoing co-operation.

We know that we have more than **3** amazing parents in a wealth of careers at New End, so...

Could you give up 30 minutes of your time to share your career journey?

From app designers to zoologists; from apprentices to CEOs... we want to hear from you!

#### **Year 5 and 6 Career Talks**

Last academic year we reintroduced career talks for the Year 6 children in the Spring and Summer Terms. These were a great success so we are aiming to plan for more in 2025 and to include Year 5 children.

Career-related learning at the primary level is more about opening up the world of opportunities that are out there, rather than asking children to refine what it is they want to do in the future. It's about showing children that opportunities are endless, exposing them to a wide range of experiences, and encouraging them to understand that they can be anything they want, regardless of their gender, ethnicity or where they live. It's also about dismantling the gendered and racialised stereotypes about careers that children as young as six can begin to develop.

Career-related learning has been proven to motivate and fire the imagination of primary children, especially when it comes to their learning, as they are beginning to learn more about their own abilities and talents and see the links between their learning and their future.

Whatever your profession or job, we would like to invite you to share some information with our Year 6 children about what you do and how you got there. We hope that these sessions will offer the children a glimpse of the wide-ranging variety of career opportunities open to them and help them begin to understand the process of considering prospective careers.

We hope that you will consider participating in order to impart your knowledge and make this a truly worthwhile experience for the children.

Please email [head@newend.camden.sch.uk](mailto:head@newend.camden.sch.uk) and we will arrange a mutually convenient time for the spring or summer term.

#### **Safeguarding Children**

Everyone in our school community is committed to keeping children and young people safe. To ensure our safe environment, we always ask parents and visitors to close the gate behind them when entering the site and to take a visitor badge when coming into the school throughout the school day when the children are in classes.

If you have any concerns about the welfare of any child at New End - if for example, you have information that suggests a child is being neglected or experiencing physical, emotional or sexual harm, or if you've picked up signs of emotional distress - please speak to one of our Designated Safeguarding Leads:

- Karyn Ray (Headteacher)
- Alan Girling (Deputy Headteacher)
- Maria Fay (EYFS Leader)

If you feel unable to speak to the Designated Safeguarding Leads or you feel that your concern is not being taken seriously you may make a referral yourself by calling Camden Social Services 020 7974 4094.

### Attendance and Punctuality

Here is last week's attendance and punctuality for individual classes.

	Attendance	Unauthorised Absence	No of Lates (no of chn)
RF	93.62%	0 😊	2 (1)
1D	100% 😊😊	0 😊	2 (2)
1K	96.67%	0 😊	2 (2)
2S	98.33%	0.33%	10 (5)
3J	96.90%	0 😊	0 😊
3P	95.19%	0.37%	3 (1)
4M	87.83%	0 😊	2 (2)
4W	100% 😊😊	0 😊	1 (1)
5M	96.80%	0 😊	3 (3)
5P	98.80%	0 😊	2 (1)
6R	92.50%	0 😊	6 (3)
6S	99.20%	0 😊	7 (3)

**Congratulations 1D and 4W – 100% attendance last week!**  
**Well done RF, 1D, 1K, 3J, 4M, 4W, 5M, 5P, 6R and 6S – the classes with**  
**no unauthorised absence last week!**  
**Well done 3J the ONLY class with everyone in school on time last**  
**week!**

Attendance across the school last week is 96.23%, with an unauthorised absence level of 0.07%. Remember that good attendance is seen as 96% or better. Attendance to date this academic year is 95.33% with an unauthorised absence level of 0.31%.

**As always, if children are ill, they must remain at home. Please ensure that you contact the school office to explain any absence to ensure that it is authorised.**

#### REMEMBER....

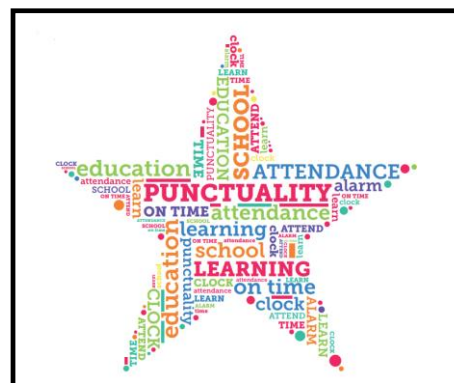
**School gates open at 8.50am.**

**School starts at 8.55am.**

There have been **40 lates** last week (18 more than the week before) involving **24 children** (11 more than the week before) throughout the school. A week which saw a rapid decline!

**With the wintery weather and the many different temporary lights in place at the moment, make sure that you leave plenty of time to get into school!**

**Children who are late will miss important learning time. Children who are late disrupt teachers teaching and other children's learning! AND...Children HATE being late!!!**





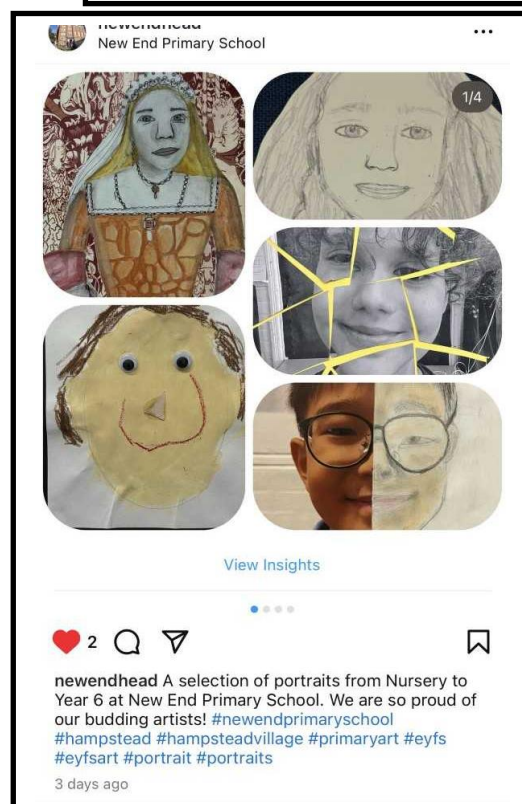
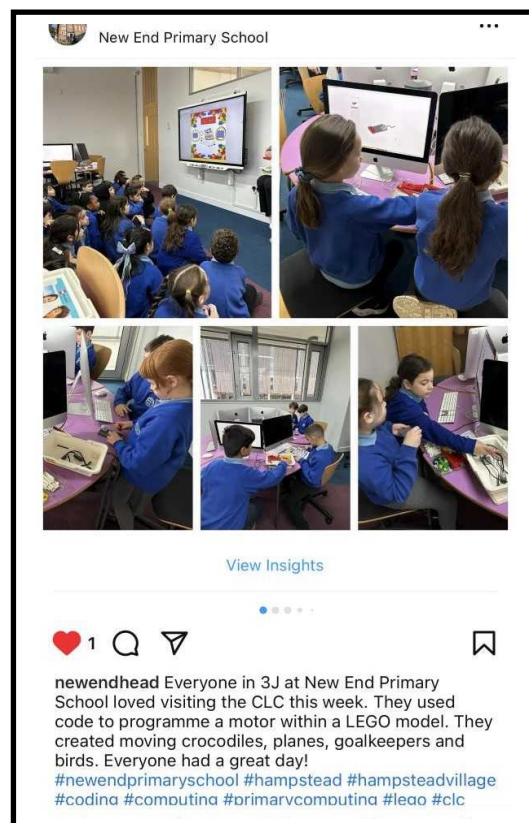
### Change of Details

Remember, if you change address, phone number or email address, please inform the school office.

All too often we try to contact families to find that the numbers or emails have been changed so please keep us up-to-date.

### Instagram this week

Here's just some of the images from posts from this week!



Don't forget to follow New End on Instagram – [newendprimarieschool](#) – and get all your friends and family to do so to!

### **And Finally**

We currently have so much lost property in school. Please take a look if your child has misplaced anything. Remember, this is not the place to drop off second hand uniform. This goes in the school office.

Continue to take care of yourselves and look out for each other.



Karyn Ray Headteacher

PS Parents with children in Nursery to Year 2 are reminded that their dental fluoride varnish programme permission forms are due back tomorrow.

### **2024-2025 Dates for your Diary**

Wed, 29 <sup>th</sup> January	4M Class Assembly
Wed, 5 <sup>th</sup> February	4W Class Assembly
Mon, 17 <sup>th</sup> Feb – Fri, 21 <sup>st</sup> February	Half Term
Fri, 28 <sup>th</sup> February	Star Assemblies
Wed, 26 <sup>th</sup> March	2S Class Assembly
Wed, 2 <sup>nd</sup> April	Nursery Class Assembly
Fri, 4 <sup>th</sup> April	Last Day of Spring Term – School Closes at 12.30pm
Tues, 22 <sup>nd</sup> April	INSET Day – school closed to children
Wed, 23 <sup>rd</sup> April	Children return to school
Fri, 25 <sup>th</sup> April	Star Assemblies
Wed, 30 <sup>th</sup> April	Reception Class Assembly
Wed, 7 <sup>th</sup> May	3J Class Assembly
W/B 12 <sup>th</sup> May	Year 6 SATs
Wed, 14 <sup>th</sup> May	1K Class Assembly
W/B 19 <sup>th</sup> May	Year 6 School Journey
Wed, 21 <sup>st</sup> May	1D Class Assembly
Mon, 26 <sup>th</sup> – Fri, 30 <sup>th</sup> May	Half Term
W/B 2 <sup>nd</sup> June and W/B 9 <sup>th</sup> June	Year 4 Multiplication Tables Check
Fri, 6 <sup>th</sup> June	Star Assemblies
W / B 9 <sup>th</sup> June	Year One Phonic Screening
Fri, 18 <sup>th</sup> July	Last Day of the 2024-2025 Academic Year – School Closes at 12.30pm
Mon, 21 <sup>st</sup> July	INSET Day
Tues, 22 <sup>nd</sup> July	INSET Day

### **2025-2026 Dates for your Diary**

Mon, 1 <sup>st</sup> Sept	INSET Day – school closed to children
Tues, 2 <sup>nd</sup> Sept	Children return to school
Mon, 27 <sup>th</sup> – Fri, 31 <sup>st</sup> Oct	Half Term
Fri, 19 <sup>th</sup> Dec	Last Day of Autumn Term – School Closes at 12.30pm
Mon, 5 <sup>th</sup> Jan	INSET Day – school closed to children
Tues, 6 <sup>th</sup> Jan	Children return to school
Mon, 16 <sup>th</sup> Feb – Fri, 20 <sup>th</sup> Feb	Half Term
Fri, 27 <sup>th</sup> March	Last Day of Spring Term – School Closes at 12.30pm
Mon, 13 <sup>th</sup> April	INSET Day – school closed to children
Tues, 14 <sup>th</sup> April	Children return to school
Mon, 25 <sup>th</sup> – Fri, 29 <sup>th</sup> May	Half Term
Mon, 1 <sup>st</sup> June	INSET Day
Fri, 17 <sup>th</sup> July	Last Day of the 2024-2025 Academic Year – School Closes at 12.30pm
Mon, 20 <sup>th</sup> July	INSET Day

**IF A DATE CHANGES OR IS ADDED, IT WILL BE HIGHLIGHTED IN THIS SECTION.**

**DATES ARE SUBJECT TO CHANGE – OFTEN BY OUTSIDE FORCES!**