



New End News



Newsletter 33
Thursday, 22nd May 2025

See the future



...it starts here!

Newsletter Contents

Page	Topic	<u>Summary of Article</u>
2	Sports Day	A Reminder about Sports Day on Friday, 6 th June
2	Cooking at New End	Information about our cooking activities over the week
2	Classes 2025-2026	Reminders about letting the school know if you are moving at the end of this academic year
3	Secondary Transfer Meetings	Dates for your diary - Information about secondary transfer meetings
3	Parent Governor election	Congratulations Marina!
3	New End on Instagram	Some of our Instagram posts from this week
4	Attendance and Punctuality	Update for the Autumn and Spring Terms
5	NESA News	Information from the school's Parent-Teacher Association
6	And Finally	Message from the Headteacher
6	2024-2025 and 2025-2026 Dates for your Diary	Planned events during this calendar year. Dates for next academic year.

Events over the Next Week

Last day of Summer Term 1 – School closes at NORMAL time
Monday, 26th – Friday, 30th May Half Term
Friday, 6th June Sports Day – Reception to Year 6

Karyn Ray Headteacher
Alan Girling Deputy Headteacher
Helen Andrews Chair of Governors
www.newend.camden.sch.uk

Sports Day

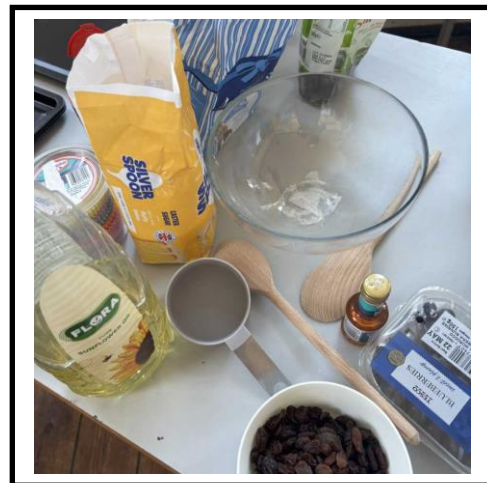
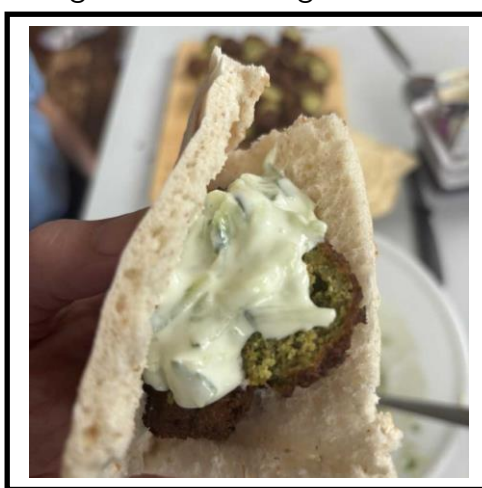
Don't forget that children from Reception to Year 6 will be taking part in the Sports Day at the Parliament Hill Running Track on Friday, 6th June.

Information was sent out via a separate letter.

We hope to see you all there.

Cooking at New End!

Children from the Nursery to Year Five have (or will be by the end of the week!) been involved in preparing or cooking some healthy foods. Staff have been trying to support the children in developing their recipe reading skills, cutting skills, measuring skills and making skills.



It would be great if parents and carers could support the further development of these skills by making a dish with their child over the half term break. Take a photo of you and your child either making the dish together or a photo of the finished creation, and send it to head@newend.camden.sch.uk.

Classes 2025-2026 – A Reminder

Staff will soon be starting the process of organising classes for the next academic year in order that children and parents can be informed before the end of term. Staff are looking at the dynamics of each year group in order to create these classes.

So that we have a clear view of the dynamics of each class we would ask any parent who knows for definite that their child will not be returning in September, to let us know in writing ASAP. We would also appreciate hearing from parents where there is a possibility of their child not returning as well.

Thank you for your co-operation.

Secondary Transfer Meetings – A Reminder

A parents' meeting about secondary schools is being held on Thursday, 19th June at 6pm and repeated on Friday, 20th June at 9.15am.

These meetings are particularly important to the current Year Five parents and carers who will need to make their choices in October 2025. Parents of children in Year 3 and 4 who will have to make decisions in the next year or two may also find it useful to attend. It is never too early to start considering your options or to be aware of the process of applying!

Please be aware that applications do not have to be finalised until the end of October 2025.

However, parents wishing to apply for state funded selective secondary schools such as QE Boys and Henrietta Barnett, need to apply before the end of this term. Dates will be provided at the meeting.

Parent Governor Elections

Congratulations to Marina Khawaja who was elected as the new parent governor at New End. Thank you to all the parents and carers took the time to vote last week.

New End on Instagram this Week

In case you missed seeing these posts this week...



43 Likes
Liked by upunlocking and others
newendhead Year 6 children from New End Primary School are off to France today. Have a great time! Enjoy and make some wonderful memories together!
#newendprimaryschool #year6 #schooljourneyassociation #year6trip #year6tripaway #france #hampstead #hampsteadvillage



17 Likes
newendhead 5M at New End Primary School cooked up a storm yesterday! Some lovely Anzac biscuits were made - and quickly eaten! All part of our busy Cooking Week at New End Primary. #newendprimaryschool #year5 #primarycooking #primarydt #cookingweek #cookingisfun #anzacsbiscuits #hampstead #hampsteadvillage



11 Likes
Liked by upunlocking and others
newendhead Year 2 at New End Primary School have been looking at the work of Paul Klee. They looked at "Senecio" and then recreated their own portraits using different shapes just as he did. Well done Year 2!
#newendprimaryschool #year2 #primaryart #paulklee #senecio #nortrait #nortraiture #hampstead

Never miss out on New End News and follow us on Instagram!

Attendance and Punctuality

Here is last week's attendance and punctuality for individual classes.

	Attendance	Unauthorised Absence	No of Lates (no of chn)
RF	96.00%	0 😊	4 (4)
1D	98.85%	0 😊	2 (2)
1K	95.56%	0 😊	5 (3)
2S	96.55%	0 😊	1 (1)
3J	93.21%	2.86%	5 (4)
3P	99.23%	0 😊	3 (2)
4M	98.23%	0 😊	8 (4)
4W	97.14%	0 😊	0 😊
5M	98.40%	0 😊	0 😊
5P	92.40%	1.60%	2 (2)
6R	98.40%	0 😊	2 (2)
6S	98.40%	0 😊	0 😊

Well done RF, 1D, 1K, 2S, 3P, 4M, 4W, 5M, 6R and 6S – the classes with no unauthorised absence last week!

Well done 4W, 5M and 6S - everyone in school on time last week!

Attendance across the school last week is 96.86%, with an unauthorised absence level of 0.48%. Remember that good attendance is seen as 96% or better. Attendance to date this academic year is 95.64% with an unauthorised absence level of 0.37%.

As always, if children are ill, they must remain at home. Please ensure that you contact the school office to explain any absence to ensure that it is authorised.

REMEMBER....

School gates open at 8.50am. School starts at 8.55am.

There have been **32 lates** last week (10 more than last week) involving **24 children** (6 more than last week) throughout the school. Let's keep these improvements going!

Children who are late will miss important learning time. Children who are late disrupt teachers' teaching and other children's learning!
AND...

Children HATE being late!!!

Please respect others and be in school on time.

EVERY MINUTE COUNTS		
MINUTES LATE PER DAY	EQUIVALENT OF MISSING	HOW MANY LESSONS THIS IS MISSED
5 MINUTES	3.4 SCHOOL DAYS A YEAR	17 LESSONS
10 MINUTES	6.9 SCHOOL DAYS A YEAR	35 LESSONS
15 MINUTES	10.3 SCHOOL DAYS A YEAR	51 LESSONS
20 MINUTES	13.8 SCHOOL DAYS A YEAR	69 LESSONS
30 MINUTES	20.7 SCHOOL DAYS A YEAR	104 LESSONS

NESA News**NESA – the New End School Parent-Teacher Association****VOLUNTEERS NEEDED: Sports Day**

With sports day coming up, we've had a volunteer request to help with set-up and de-rig on 6th June.

MORNING:

- Transport marquees to the event from school (car/s required)
- Help assemble the marquees

AFTERNOON:

- Help dismantle the marquees
- Transport marquees back to school from the event (car/s required)

If you are available for any or all jobs, please send me a message so I can coordinate it.

Secret Garden Event - thanks for attending

Despite the rogue chill on the day, the secret Garden Party was a wonderful evening filled with laughter and woodsmoke, and we even decorated the cocktails with herbs grown in the garden.

Thank you to everyone that made it, especially the teachers! It was lovely to see everyone.

**Open Afternoons**

The Secret Garden has now been open Monday to Thursday between 3pm-4.30pm, and we'd love your feedback - any suggestions or if you just want to discuss the garden, please do get in touch!

SAVE THE DATE! The Summer Fair: Sunday 6th July, 12pm-3pm.

Classes will be helping to run the Summer Fair, including the BBQ, entrance, bar, cakes, jars and more. If you haven't volunteered before, now is the time to get involved!

Many thanks

Max Christodoulou
NESA Chair

And Finally

School closes at normal time tomorrow for the half term break. Children will return on Monday, 2nd June.

Continue to take care of yourselves and look out for each other.



Karyn Ray Headteacher

2024-2025 Dates for your Diary

Mon, 26 th – Fri, 30 th May	Half Term
W/B 2 nd June and W/B 9 th June	Year 4 Multiplication Tables Check
Fri, 6 th June	Sports Day – Reception to Year 6
Fri, 13 th June	Star Assemblies
W / B 9 th June	Year One Phonic Screening
Thurs, 10 th July	School Production – Nursery, 1K, 2S, 3J, 4M, 5M (6R am, 6S pm)
Fri, 11 th July	School Production – Reception, 1D, 2S, 3P, 4W, 5P (6S am, 6R pm)
Fri, 18 th July	Last Day of the 2024-2025 Academic Year – School Closes at 12.30pm
Mon, 21 st July	INSET Day
Tues, 22 nd July	INSET Day

2025-2026 Dates for your Diary

Mon, 1 st Sept	INSET Day – school closed to children
Tues, 2 nd Sept	Children return to school
Mon, 27 th – Fri, 31 st Oct	Half Term
Fri, 19 th Dec	Last Day of Autumn Term – School Closes at 12.30pm
Mon, 5 th Jan	INSET Day – school closed to children
Tues, 6 th Jan	Children return to school
Mon, 16 th Feb – Fri, 20 th Feb	Half Term
Fri, 27 th March	Last Day of Spring Term – School Closes at 12.30pm
Mon, 13 th April	INSET Day – school closed to children
Tues, 14 th April	Children return to school
Mon, 25 th – Fri, 29 th May	Half Term
Mon, 1 st June	INSET Day
Fri, 17 th July	Last Day of the 2025-2026 Academic Year – School Closes at 12.30pm
Mon, 20 th July	INSET Day

IF A DATE CHANGES OR IS ADDED, IT WILL BE HIGHLIGHTED IN THIS SECTION.

DATES ARE SUBJECT TO CHANGE – OFTEN BY OUTSIDE FORCES!